

# SONOPULS 190



PASSION FOR MOTION



*Partner for Life*

**SONOPULS 190**  
Fast and easy ultrasound treatment

# SONOPULS 190

## Fast and easy ultrasound treatment

The new Sonopuls 190 is fast and easy. A unit with an extremely fast start-up, a fast way to set-up treatment parameters and a unit that gives a fast therapeutic results. The compact design, the clear TFT screen, the touchscreen interface and the ergonomic design turn this small unit into a big asset for the therapist.

Ultrasound therapy is a proven effective treatment method for numerous pathologies. In order to simplify the selection a number of preprogrammed protocols are stored in the Sonopuls 190. These evidence based protocols provide you with clear instructions and will set the unit parameters automatically for treatment.



### EVIDENCE BASED PROTOCOLS

Provided with 22 evidence based treatment protocols, completely with anatomical representations and clear instructions for treatment.

### PROGRAMMABLE

Besides the 22 evidence based protocols you can also store 20 protocols according to your own guidelines.

### EXTREMELY QUICK STARTUP

Start the unit and it is ready for use immediately. No startup delay, no operating system to load but an instantaneous availability of the full functionality of the unit.

### CRYSTAL CLEAR TFT COLOUR SCREEN

A crystal clear and scratch resistant screen that allows full visibility on all parameters from all viewing angles.

### TOUCHSCREEN USER INTERFACE

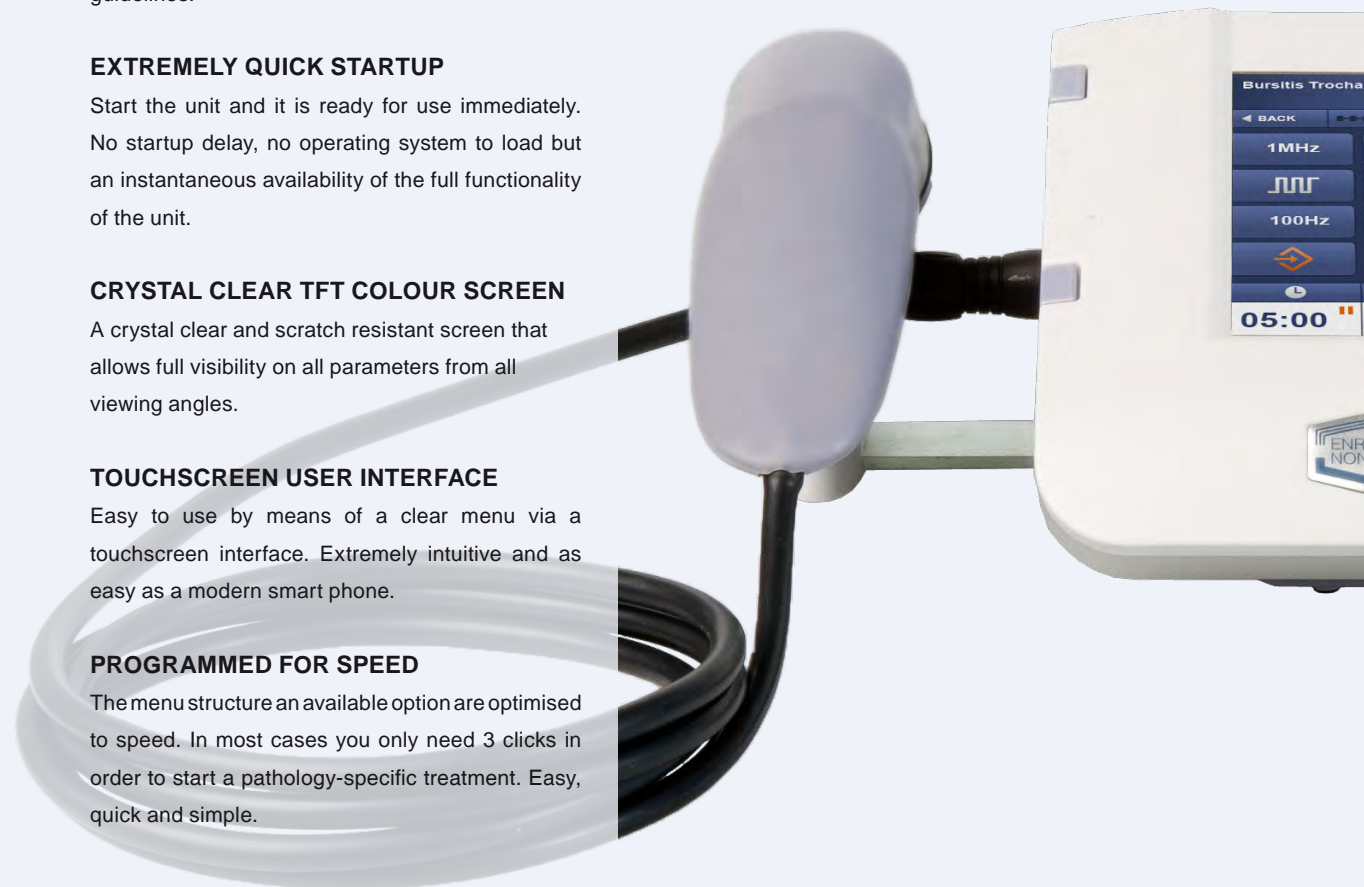
Easy to use by means of a clear menu via a touchscreen interface. Extremely intuitive and as easy as a modern smart phone.

### PROGRAMMED FOR SPEED

The menu structure and available options are optimised to speed. In most cases you only need 3 clicks in order to start a pathology-specific treatment. Easy, quick and simple.

### ERGONOMIC DESIGN

The treatment head is designed to fit your hand comfortably. A design completely based on functionality and user-friendliness.



# SONOPULS 190

## CONTACT CONTROL

A 360 degrees visible light for contact control. A clear indication for the effective transfer of energy that enables you to conduct the therapy as efficient as possible.



## 2 TREATMENT HEADS POSSIBLE

You can connect both the small 0,8 cm<sup>2</sup> as well as the large 5 cm<sup>2</sup> ultrasound treatment head in order to quickly change heads.

## ENERGYEFFICIENT

Sounds as a paradox for a unit which primary goal is to transfer energy to the human body, but due to smart energy saving modes no waist is generated when the unit is in rest-mode.

## COMPACT AND STYLISH

An extremely compact unit, small and lightweight allowing for easy transportation. But also stylish and beautiful, a unit that is worthwhile showing!

## BY ENRAF-NONIUS, SO SAFE, RELIABLE AND DURABLE

An Enraf-Nonius unit, the worldwide supplier for physiotherapy and rehabilitation. Made with special attention to quality, durability and safety.

## A TREATMENT HEAD WITH ADDED VALUE

A intelligent treatment head, packed with electronics and covered with a special coating making it smooth and comfortable to use.

## ULTRA-FLEXIBLE CABLE.

The cable between the unit and the ultrasoundhead is extremely flexible. This assures easy following of all your movements during the treatment and assures never to be a limitation!



## Ordering data

- 1631901 Sonopuls 190 with an ultrasoundhead of 5 cm<sup>2</sup>
- 1631902 Sonopuls 190 with an ultrasoundhead of 0,8 cm<sup>2</sup>
- 1631903 Sonopuls 190 with an ultrasoundhead of 5 cm<sup>2</sup> and of 0,8 cm<sup>2</sup>

		1631901	1631902	1631903
<b>Standard accessories</b>				
3442929 <sup>(1)</sup>	Contact-gel, 1 bottle of 250 ml	■	■	■
3444357	Mains connecting cable	■	■	■
<b>Optional accessories</b>				
3442929	Contact-gel, bottle 250 ml, box of 12	■	■	■
3442930	Contact-gel, bottle 850 ml, box of 12	■	■	■
3442931	Contact-gel, canister of 5 l	■	■	■
3442932	Dispenser-set for 5 l canister	■	■	■
<b>Technical specifications</b>				
Ultrasoundfrequencies:	1 and 3 MHz	■	■	■
Ultrasound:	continuous and pulsed	■	■	■
Duty cycles	100 Hz / 5, 10, 20, 33 <sup>1</sup> / <sub>3</sub> , 50, 80%	■	■	■
Pulse frequency	16 Hz, 48 Hz and 100 Hz	■	■	■
Intensity:	0-2 W/cm <sup>2</sup> continuous,	■	■	■
	0-3 W/cm <sup>2</sup> pulsed <sup>(2)</sup>	■	■	■
Number of US-connections:		2	2	2
ERA US applicator large	5 cm <sup>2</sup>	■		■
ERA US applicator small	0,8 cm <sup>2</sup>		■	■
Pre-programmed protocols:	22 protocols - evidence based and graphically supported	■	■	■
Programmable positions:	20 positions	■	■	■
TFT touchscreen	480 x 272 pixels	■	■	■
Supply voltage:	100-240 V ± 10% (50/60 Hz)	■	■	■
Dimensions (wxdxh):		21 x 19 x 9 cm	21 x 19 x 9 cm	28 x 19 x 9 cm
Weight:		760 gr	760 gr	838 gr

(1) = The Sonopuls is delivered with 1 bottle of contact-gel. The articlenumber 3442929 however represents a box of 12 bottles.  
 (2) = Except 80%, which has a maximum of 2,5 W/cm<sup>2</sup>.



# SONOPULS 190



## PASSION FOR MOTION

Your distributor:

Enraf-Nonius B.V.  
Vareseweg 127  
3047 AT Rotterdam  
P.O. Box 12080  
3004 GB Rotterdam  
The Netherlands  
T +31 - (0)10 - 20 30 600  
F +31 - (0)10 - 20 30 699  
E [info@enraf-nonus.nl](mailto:info@enraf-nonus.nl)  
[www.enraf-nonus.com](http://www.enraf-nonus.com)

Technical modifications reserved

# SONOPULS 190